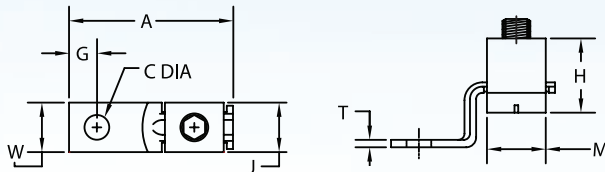
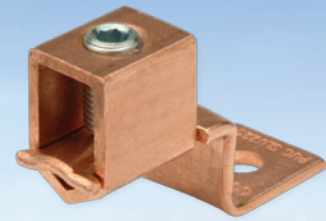


Copper Mechanical Lugs - One Hole, Single Collar

Types SLU & SAU (Offset Tongue)

- Manufactured from electrolytic copper for maximum conductivity and strength
- Unique design of the concave pressure bar and V-bottom collar assures positive contact and firm, permanent grip
- Offset tongue for joining a wide range of cable to equipment pads or bars
- Plated steel set screws resist corrosion
- For tin plating, suffix catalog number with “-TN”



CATALOG NUMBER	COPPER CONDUCTOR RANGE	APPROXIMATE DIMENSIONS (IN.)								AMPERE RATING NEC	SET SCREW TYPE
		A	W	G	C (DIA.)	T	M	H	J		
SLU-25*	10 Str. - 14 Str.	.91	.31	.19	.16	.07	.28	.36	.25	25	Pan Head Slotted
SLU-35	6 Str. - 14 Sol.	1.31	.38	.23	.20	.07	.43	.50	.33	35-50	Pan Head Slotted
SAU-70	4 Str. - 14 Sol.	1.41	.50	.25	.27	.08	.43	.56	.38	70	Headless Slotted
SLU-70	2 Str. - 8 Sol.	1.55	.50	.25	.27	.09	.50	.65	.47	70-90	Headless Slotted
SLU-125	1/0 Str. - 8 Sol.	1.97	.63	.50	.27	.13	.63	.88	.62	125	Socket Hex
SLU-175	3/0 Str. - 4 Str.	2.19	.75	.44	.41	.13	.75	1.03	.71	175	Socket Hex
SLU-225	4/0 Str. - 6 Str.	2.38	1.00	.47	.34	.13	1.00	1.17	.75	225	Socket Hex
SLU-300	350 kcmil - 1/0 Str.	3.16	1.00	.50	.41	.19	1.23	1.39	1.00	300	Socket Hex
SLU-400	500 kcmil - 4/0 Str.	4.25	1.50	.88	.41	.19	1.50	1.57	1.16	400	Socket Hex
SLU-650	1000 - 600 kcmil	4.63	2.00	1.16	.53	.25	1.88	2.34	1.68	650	Socket Hex

*UL listed and CSA certified

Copper Mechanical Lugs - One Hole, Single Collar

Types SLS & SAS (Straight Tongue)

- Manufactured from electrolytic copper for maximum conductivity and strength
- Compact design joins a wide range of copper conductors to equipment or terminal blocks for power and grounding applications
- Plated steel set screws resist corrosion
- For tin plating, suffix catalog number with “-TN”
- UL 467 listed and UL 486A-B listed

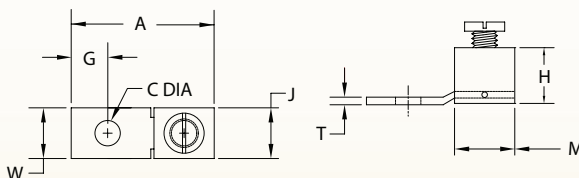


Fig. 1

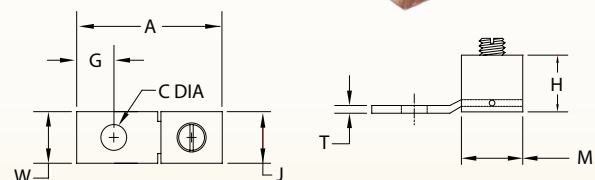


Fig. 2

CATALOG NUMBER	FIGURE NO.	COPPER CONDUCTOR RANGE	APPROXIMATE DIMENSIONS (IN.)								AMPERE RATING NEC	SET SCREW TYPE
			A	W	G	C (DIA.)	T	M	H	J		
SLS-35	1	6 Str. - 14 Str.	1.00	.37	.24	.20	.06	.37	.47	.34	35-50	Pan Head Slotted
SAS-70	2	4 Str. - 14 Str.	1.26	.50	.38	.27	.08	.49	.53	.44	70	Headless Slotted